



Greenhouses

Land-based interventions

Crop relocation



Leaf Protein Concentrate

Food conservation interventions

Reducing food waste



Mushrooms



Animals fed on grass and agricultural residues

Redirection of crops for biofuel production toward human consumption

Redirection of crops for animal agriculture toward human consumption

Expansion of planted crop area

Food without agriculture: high-tech food interventions

Foraging

FOOD INTERVENTIONS
for severe food shock scenarios

Lignocellulosic biomass as a sugar source



Bivalve cultivation

Seaweed

- Strongest recommendations
- Recommended, more research needed
- Limited benefits

Chemical synthesis of food from hydrocarbons

Single Cell Protein from liquid fermentation



Low-tech microalgae cultivation

Water-based interventions

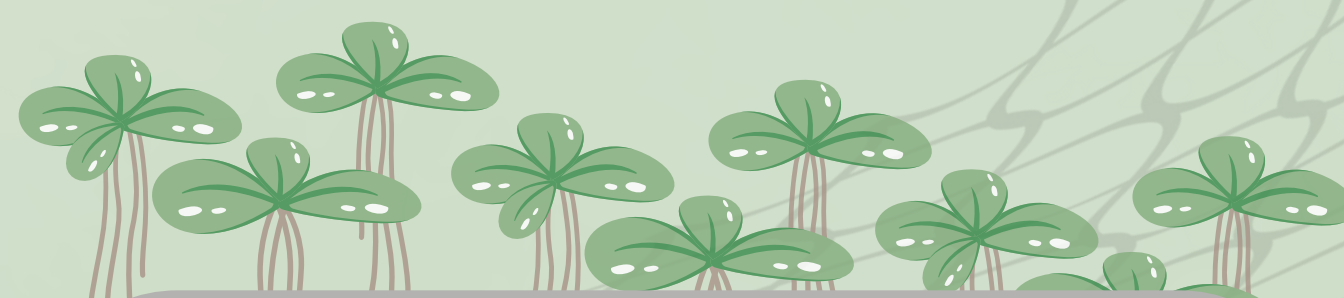


Chemical synthesis of food from carbon dioxide

Single Cell Protein from gas fermentation

Regular fishing

Single Cell Protein from other sources



Freshwater pond plants

Krill fishing

Microbial cell factories for food production

In vitro BioTransformation (ivBT)

Deep sea fishing (mesopelagic fish)

Integrated multi-trophic aquaculture (IMTA)

Artificial light grown food (vertical farming)